

**Interreg**   
EUROPEAN UNION

France ( Channel  
Manche ) England

European Regional Development Fund

**BLUEPRINT**   
to a Circular Economy



EUROPEAN UNION

# Welcome to the BLUEPRINT Circular Economy Roadshow

**The session will begin soon**

[projectblueprint.eu](https://projectblueprint.eu)

**Interreg**   
EUROPEAN UNION

France ( Channel  
Manche ) England

European Regional Development Fund

**BLUEPRINT**   
to a Circular Economy



EUROPEAN UNION

# Putting reuse and waste prevention on the map in local authority waste strategies

**Friday 13 May | 09:00-10:30**

# Housekeeping



This session will be recorded



Use the chat/Q&A box for your questions



Please leave feedback



# Putting reuse and waste prevention on the map in local authority waste strategies

## Chair's welcome

Matthew Homer, London Borough of Islington

# Putting reuse and waste prevention on the map in local authority waste strategies

1. Claire Donovan, End Furniture Poverty
2. James Potter, Hampshire County Council
3. Annette Dentith, Devon County Council

**Interreg** 

France ( Channel  
Manche ) England

European Regional Development Fund

**BLUEPRINT**   
to a Circular Economy



EUROPEAN UNION

# Putting reuse and waste prevention on the map in local authority waste strategies

*Speaker slides...*

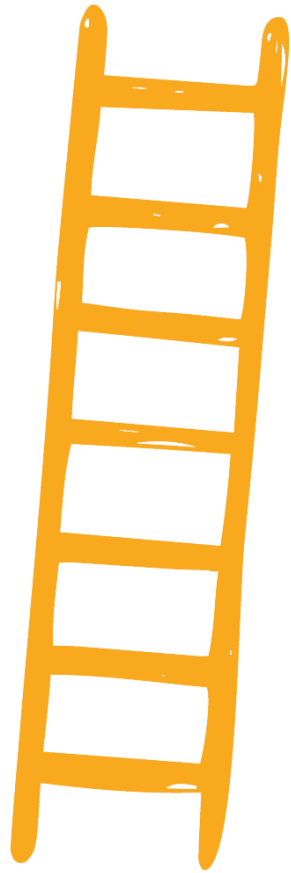


# Who are End Furniture Poverty?

- Campaigning arm of FRC Group, currently Social Enterprise of the Year, created over 30 years ago
- Group of registered charities and 100% not-for-profit
- FRC launched End Furniture Poverty in 2015 when we realised nobody was specifically looking at Furniture Poverty.
- EFP works to:
  - improve our understanding of Furniture Poverty
  - raise awareness of, and to promote solutions to, Furniture Poverty
  - to ensure that everyone has access to the essential items they need to lead a secure life



**Furniture Poverty** - The inability to afford or access basic furniture, appliances and furnishings that provide a household with a socially acceptable standard of living



### **Furniture insecurity:**

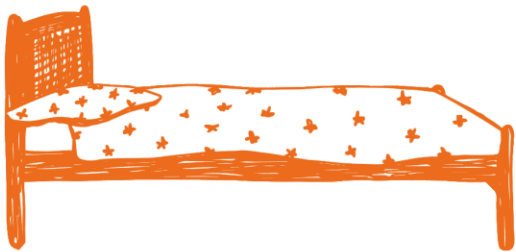
- A household has the items they need for now,
- If something essential breaks or needs replacement, they will not have the savings to do so
- Often moving from one crisis situation to another.

### **Furniture destitution:**

- A household has none or very few of the basic items needed
- In a long-term, chronic situation

# The Essential Furniture Items

- Bed, bedding and mattress
- Table and chairs
- Sofa and/or easy chairs
- Wardrobe/drawers
- Floor coverings
- Window coverings
- Washing machine
- Refrigerator and freezer
- Cooker/oven
- TV



# Poverty Statistics

- More than one in five of the UK population (22%) are in poverty– 14.5 million people.
- Of these, 8.1 million are working-age adults, 4.3 million are children and 2.1 million are pensioners.
- Almost one in three children in the UK are living in poverty (31%)
- Over 2 million households – 4.8 million people – were living without at least one essential household appliance in 2019
- Cost of furniture increased by 32% between 2008 and 2020, white goods rose by 17%

# Financial Impact – Poverty Premium

Increased costs to average annual family bills:

- Living without a cooker adds £2,100 to food bill
- Living without a fridge/freezer, adds £1,365 to food bill
- Living without a washing machine adds £1,000 washing expenses
- Living with faulty or inefficient white goods adds over £100 to energy bills.

# What solutions exist for Furniture Poverty?

- Furnished Tenancies
- Local Welfare Provision
- Preloved furniture
- Charitable grants and funds
- Affordable borrowing – e.g. credit unions, Fair For You

# Research: Furnished Tenancies and LWA

Only **2% of social rented properties are let as furnished or partly furnished** (i.e. floor coverings/curtains) in comparison to **29% of private rented properties**

- 32 English local authorities have closed their local welfare assistance schemes
- NAO report shows that investing in local welfare, creates significant savings to the public purse
- Investing £500k can save £9.7m according to Milton Keynes Council

# Furniture Reuse

- Reusing furniture from your bulky waste stream has great environmental and social benefits
- Eases the burden of the poverty premium
- Creates savings across other services, such as social care, mental health, temporary accommodation costs and more

# Bulky Bob's

- Our furniture reuse charity deals with over 125,000 items of unwanted furniture every year
- Held bulky household waste contract with Liverpool City Council for over 20 years
- Crisis Referral Scheme giving away free furniture
- Give away and sell over 25,000 essential furniture items each year
- Created over £4m of social value in 2021/22



# The Reuse Network

- Membership organisation for furniture reuse charities, promoting furniture reuse
- Help businesses find ways to support their local communities by diverting reusable items from landfill
- Help charities become compliant by offering audits
- Provide a support network through fortnightly meetings and seminars discussing the “hot topics” relevant to the charity reuse sector
- Give charities access to high street retailers and develop relationships with commercial companies to obtain high quality products
- Provide marketing support to charities and businesses

# Flooring

- Standard practice to rip flooring out of properties when tenants move out
- Lack of flooring can mean 15% of heat is lost
- 1.75m sqm of flooring ripped out and disposed of every year in Scotland alone
- Impacts on comfort, health and safety, and noise in flats
- Flooring so hard to obtain on low incomes

# Mattresses

- 400,000 children in the UK don't have their own bed to sleep on (pre-pandemic figures)
- Around 6 million mattresses thrown away in the UK every year
- Reusing a mattress saves 79kg of CO<sub>2</sub>
- We're now reusing 12,500 annually
- Saving 987 tonnes of CO<sub>2</sub>
- Equivalent to taking 175,000 cars off the road for a day

# Meet Mattilda



# Suggested First Steps

## Local Authorities:

- Look at your bulky household waste stream
- Furniture reuse at municipal waste sites

## Social Housing Providers, including local authorities:

- Reuse furniture left behind in properties
- Clean and leave flooring and curtains in properties
- Partner with a local furniture reuse organisation – but remember to pay them!
- Leverage social value clauses

# How End Furniture Poverty Can Help

- We provide a wide range of guidance and support to organisations exploring furniture provision – furnished tenancies, furniture reuse, furniture gifting
- We also help you to explore other options for furniture provision, with relevant introductions to organisations following a similar path.
- We can provide a range of data to demonstrate the positive impact of furniture provision
- We can help you to measure and monitor the success/impact of your scheme

# Links to Guides, Case Studies and Reports

There are lots of resources on our website, including:

- Guides to Finding Furniture
- Case studies with Torus and Stockport Homes Group
- Guide to Creating a Sustainable Furnished Tenancy Scheme
- Visit: <https://endfurniturepoverty.org/resources/>
- Our Furnished Tenancies Research Report, No Place Like Home is here: <https://endfurniturepoverty.org/research/no-place-like-home-download/>

# Any questions?

For more information about the campaign:

[www.endfurniturepoverty.org](http://www.endfurniturepoverty.org)

[Claire.Donovan@EndFurniturePoverty.org](mailto:Claire.Donovan@EndFurniturePoverty.org)

07714 521 062

 [@EndFurniturePov](https://twitter.com/EndFurniturePov)



# Putting reuse and waste prevention on the map in local waste authority waste strategies



James Potter

Assistant Director of Waste, Planning and Environment

Hampshire County Council

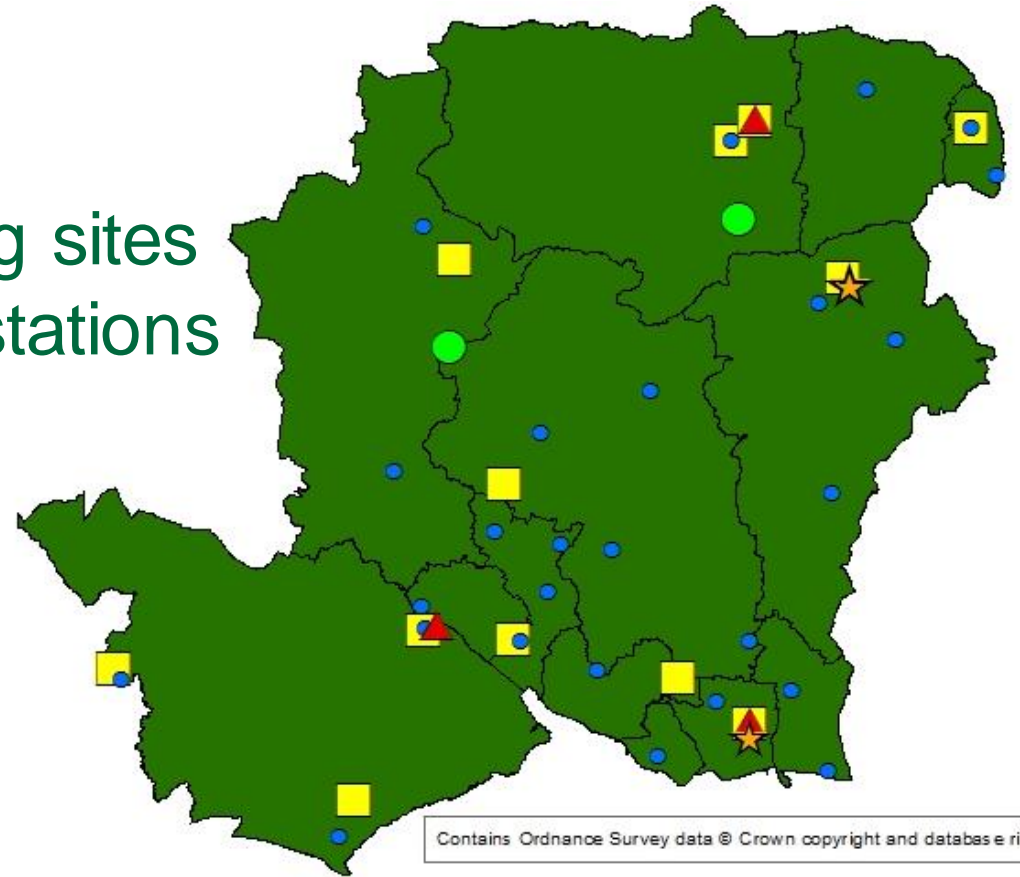
# Waste management arrangements in Hampshire



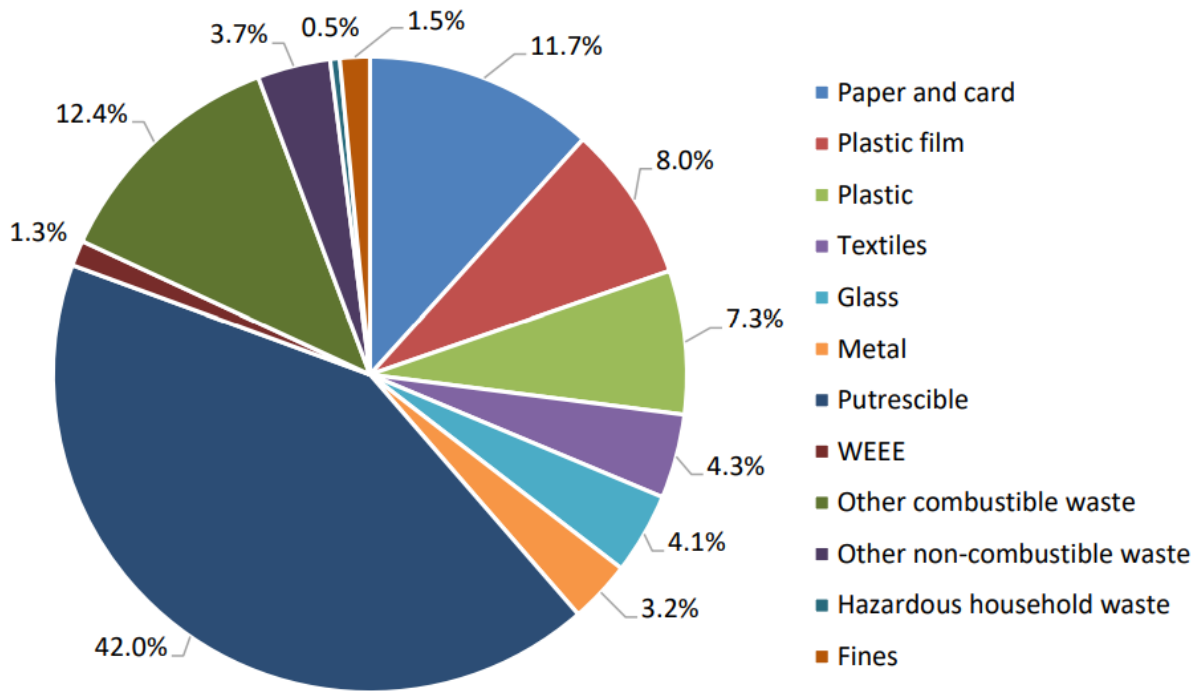
INTEGRA



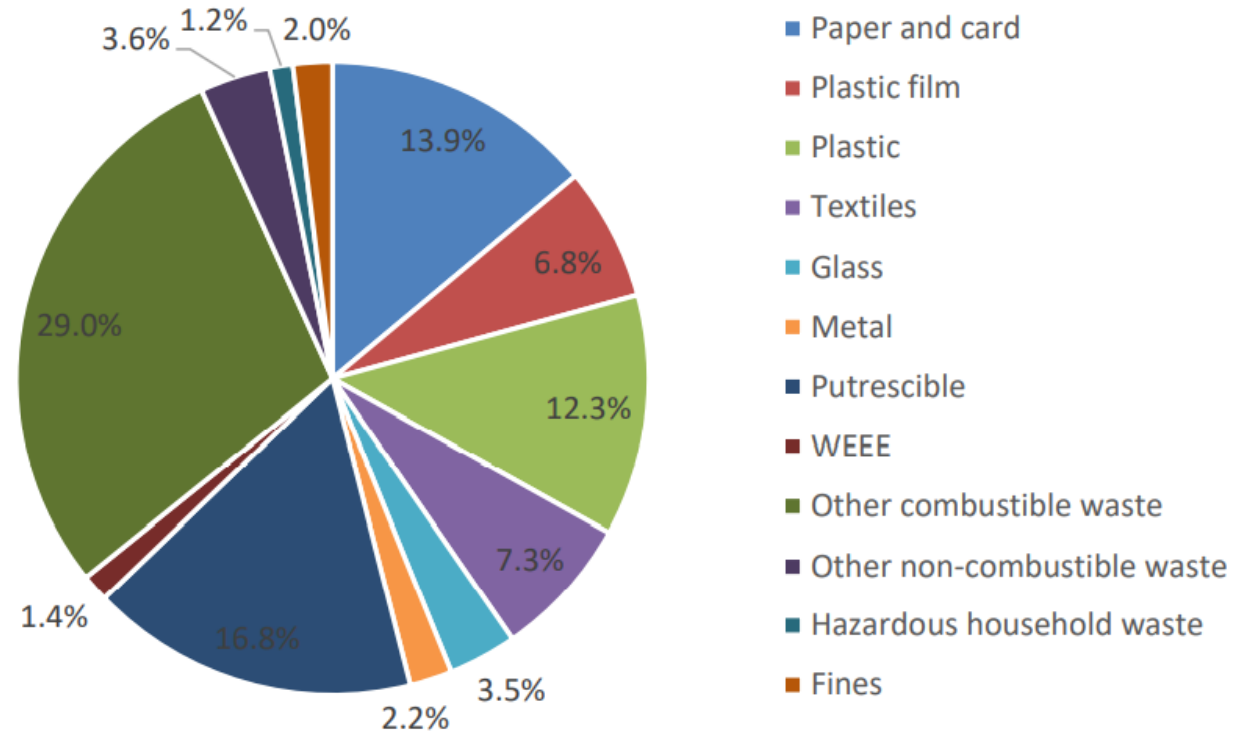
- ▲ 3 ERFs
- ★ 2 MRFs
- 2 Composting sites
- 12 Transfer stations
- 26 HWRCs



# Composition of kerbside collected waste (2019)



# Composition of HWRC residual waste (2019)





# Waste Prevention and Reuse in Hampshire

# Smart Living

*Minimising waste in Hampshire homes*



346,323 accounts reached (2021/22 year total)

A screenshot of the Hampshire County Council website's "Smart Living" page. The page has a teal header with the council's logo and navigation links. Below the header is a teal banner with the "SMART LIVING" logo and a white box containing the text "Minimising waste in Hampshire homes". A purple navigation bar contains several menu items. The main content area features a survey announcement with a teal "Share your views" button and a background image of a refrigerator filled with fresh vegetables.

Hampshire County Council Services Search this site Sign in Register

Home > Waste prevention and recycling

SMART LIVING

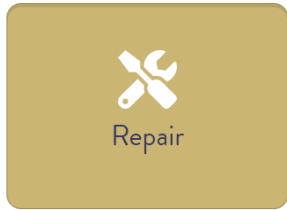
Minimising waste in Hampshire homes

Smart Living In the kitchen In the garden Get involved In the home Plastics and packaging Swap it online!

**Complete our food and composting habits survey**

You'll have a chance to win £100 vouchers!

Share your views



## Could you be a kitchen hero?

Save money and help reduce your climate impact.

Sign up to a free new tool



### Play Top Chomps!

Every time we throw away food, the resources used to grow it go to waste too. Play our game of Top Chomps to learn more.

Play Top Chomps





## Supporting national and international campaigns

- Food Waste Action Week
- European Week for Waste Reduction
- The Courtauld 2030 Commitment
- Zero Waste Week
- International Composting Awareness Week
- Reusable Nappy Week

# Waste prevention Community Grant Fund



Set up in 2017



Funding of up to £5k available for community groups, charities, schools or SMEs in the Hampshire area

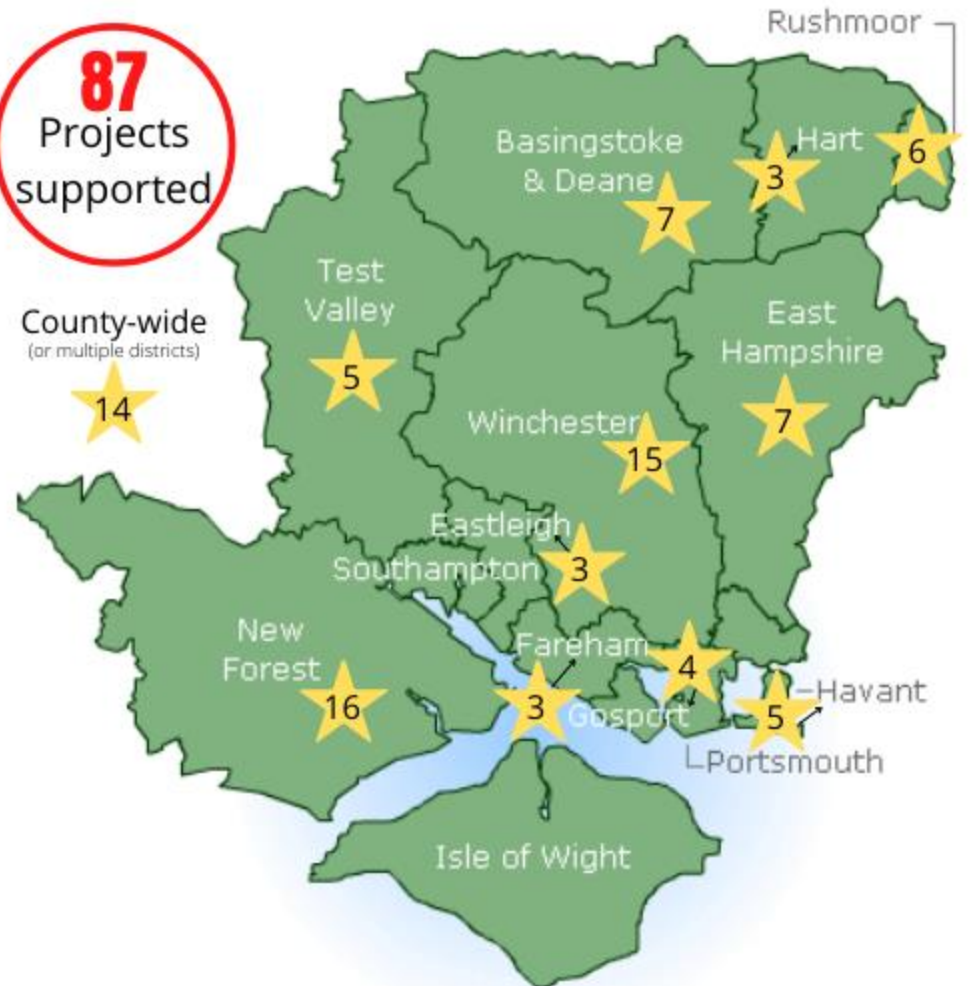


Applications are scored on waste prevention outcomes, community benefits, innovation in the local area and their sustainability/legacy



Successful projects are required to submit regular reporting for a calendar year

**87**  
Projects supported





# Impacts

## Waste Prevention Community Grant Fund

Funding summary:



Types of organisation:



Materials targeted:



- Up to date as of January 2022
- Does not include the 23 projects awarded funding in March 2022

### ACHIEVEMENTS

2017-2022

**21,456,000**  
people engaged online

**320**  
tonnes of waste prevented

**10,000**  
items repaired

**860**  
low-income residents assisted

**£269,000**  
savings secured for residents

**20,500**  
kg CO<sub>2</sub> equivalent saved

**125**  
events

**7000**  
volunteer hours

**£64,000**  
income generated in local economy

**2000**  
volunteer opportunities created

**33,000**  
items reused



\*Figures are based on reported data. All figures over 1000 are rounded to the nearest 500. Updated February 2022.



# Reuse



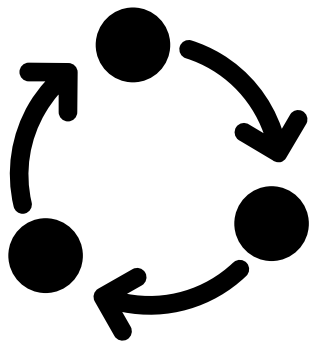
Saving money for those in need



Supporting Charities



Opportunities to learn new skills



Supporting the circular economy



Reducing CO<sub>2</sub> emissions

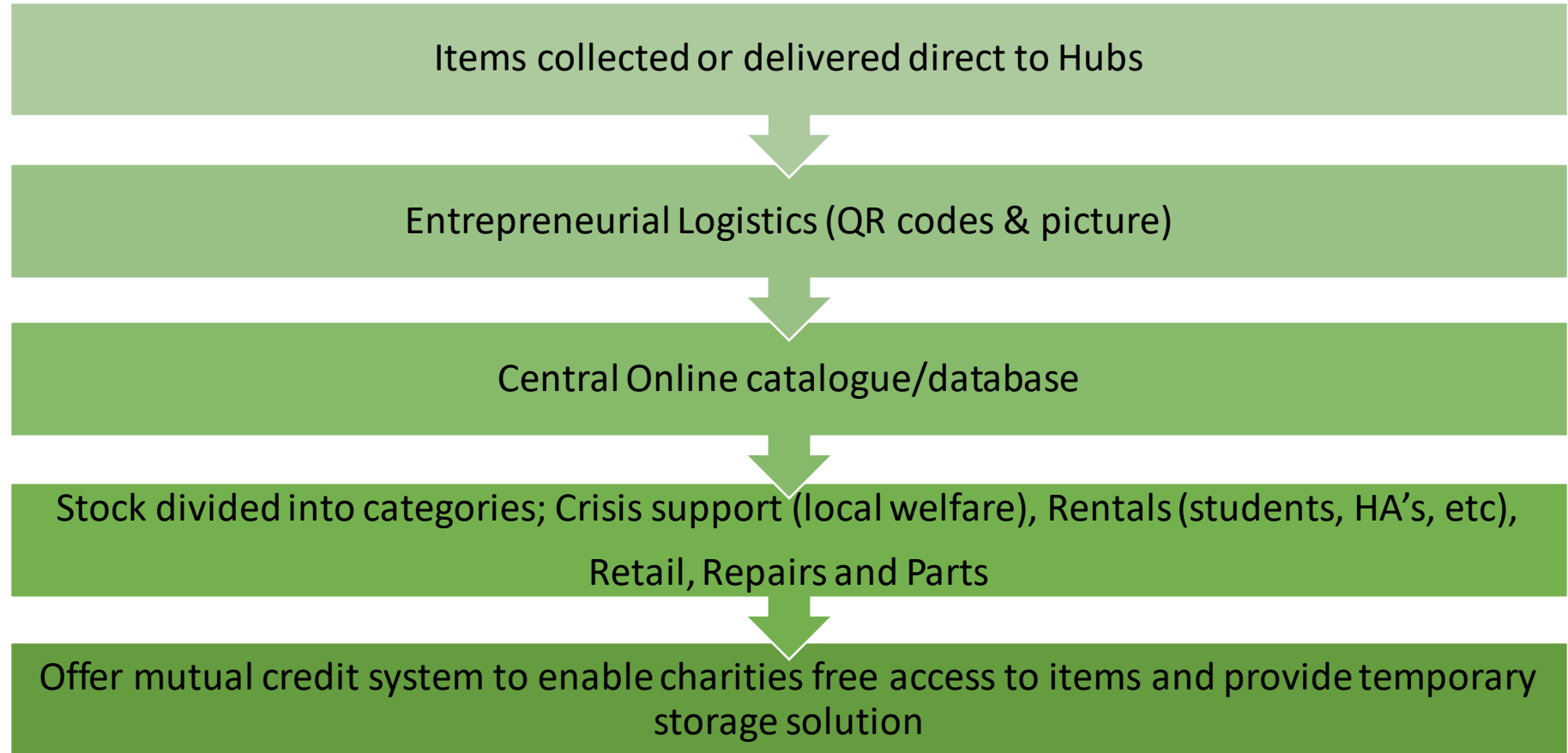


Providing volunteering opportunities

# Previous and current work...



# Looking ahead...



THE CASE FOR A  
**PLASTIC  
PACKAGING  
TAX**  
IN THE UNITED KINGDOM



**Extended Producer  
Responsibility at heart  
of waste strategy**



consistency  
is key

## Consistency

- Food waste prevention should come ahead of AD
- Universal garden waste goes against proximity principle

## DRS

- Missed opportunity to promote refills and reuse

## EPR

- Missed opportunity for targets for reuse and refills and modulating for reuse and refills

## Waste prevention programme

- More focus on large scale consumer behaviour change



# Joint Municipal Waste Management Strategy (JMWMS) 2021



*"The Project Integra partners will work together to deliver high performing, forward looking recycling and waste management services which provide value for money for Hampshire taxpayers meeting local needs and recognising the climate emergency and need for a reduction in carbon emissions."*

- Waste reduction as a strategic objective
- Disposal and collection roles





## Residual waste targets

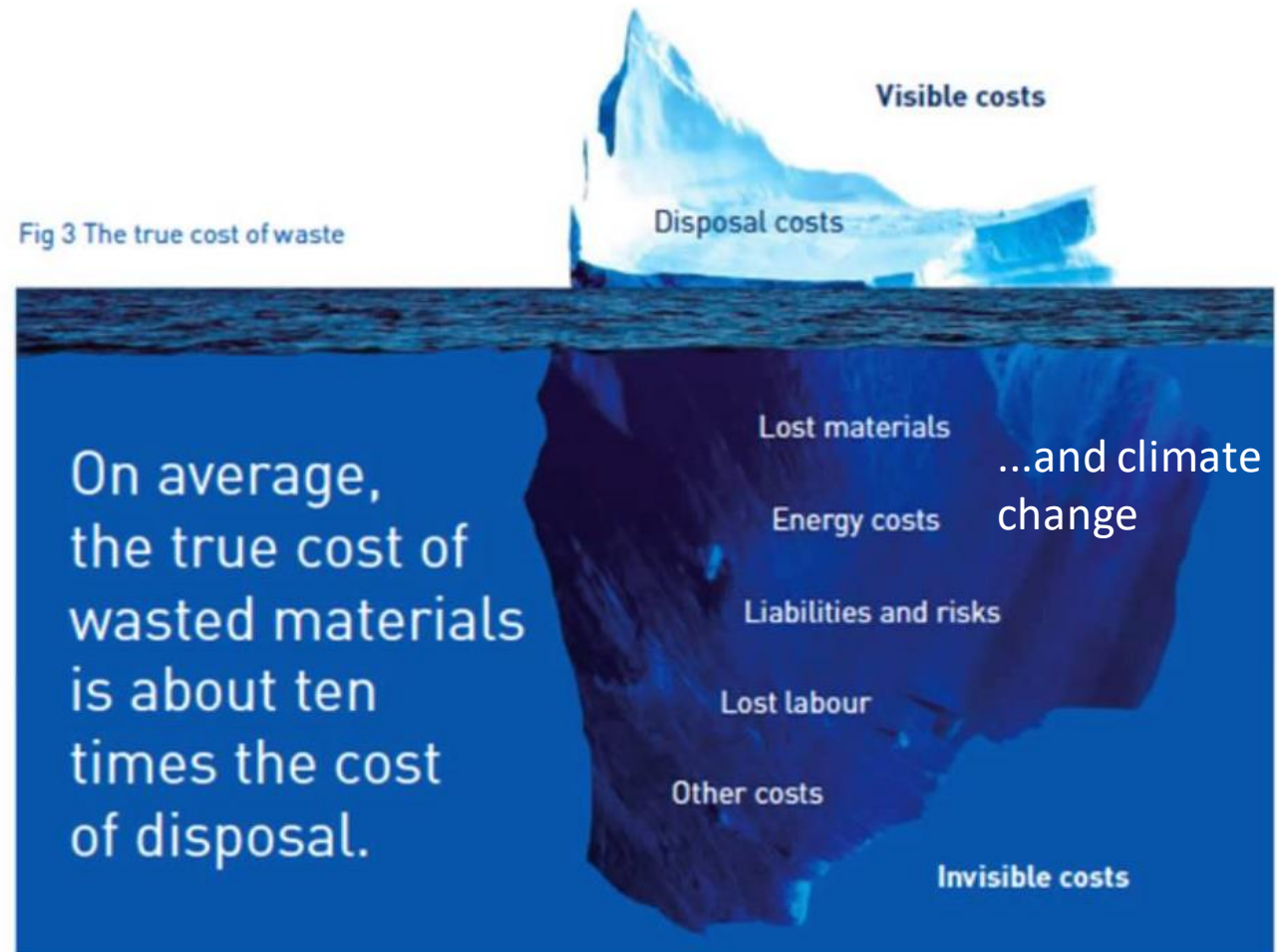
- The Environment Act 2021
- Waste Partnership funding arrangements
- Principles of shared costs and shared savings based on performance



# Challenges

- Throwaway society
- Entrenched behaviours & habits
- Split incentives
- Measuring success

Fig 3 The true cost of waste



# Thank you



Hampshire  
County Council



# Reuse in Devon

Annette Dentith

Principal Waste Manager

Devon County Council

# Introduction

- Resource and Waste Management Strategy for Devon and Torbay
- Reuse Officer
- Events
  - THE BIG FIX
  - Reuse Week
  - Upcycling Day
  - The Devon County Show
- Offers e.g. swishing kits, PAT testing, workshops
- Bulky Household Waste
- Household Waste Recycling Centres
- Community Action Groups Devon
- Signposting via [www.recycledevon.org](http://www.recycledevon.org)

# Resource and Waste Management Strategy for Devon and Torbay



- Reuse key part of the Strategy
- Target 2% by 2025 and 5% by 2030
- Aim to:
  - Promote e.g. Refill
  - Communicate e.g. Events, website, social media, videos
  - Support e.g. lending swishing kits
  - Collaborate e.g. skills sharing events, peer to peer learning
  - Improve e.g. HWRC initiatives, BHW hierarchy of reuse
  - Explore e.g. cross cutting opportunities in schools/communities
  - Research e.g. opportunities for textiles

# Reuse Officer

- Position in place since 2015
- Part time
- Working with
  - District colleagues
  - HWRC contractor Suez
  - Working with repair cafes and other community groups
  - Communications colleagues
  - Devon Climate Emergency team
- Putting on events

# THE BIG FIX



**We are taking part in  
Britain's biggest repair café!**

**Join us on  
Saturday 15th February**

**Bring your broken household  
items to be mended and be part  
of the Repair Revolution.**

# Events



16 - 22 May 2016



# Upcycling Day

Before



After



# Reuse project offers

- Upcycling Workshops
- Swishing loan kits
- Library of things
- Jumble Trail
- Repair IT workshops
- Support for various groups – e.g. repair cafes, reuse charities
- PAT testing training



# Reuse in Devon



# Bulky Household Waste

- To encourage reuse there is a flow diagram which can be used by staff answering the phone

- Here are the links to EA and charities:

## EA - Register of Waste Carriers, Brokers and Dealers

- <https://environment.data.gov.uk/public-register/view/search-waste-carriers-brokers>

## Recycling in Ottery

- <https://www.rioforyou.co.uk/>

## Proper Job, Chagford

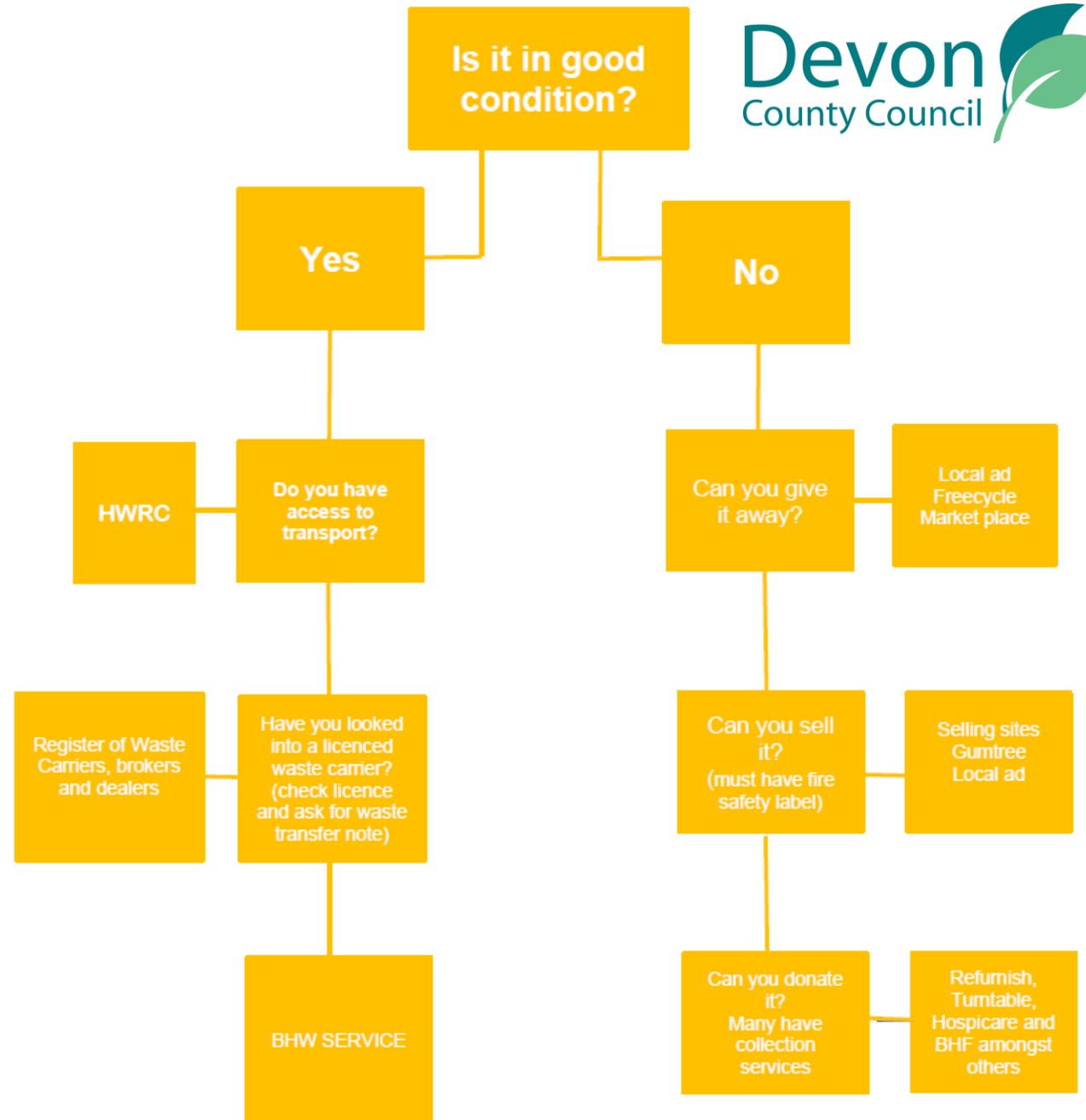
- <https://www.proper-job.org/>

## Refurnish

- <https://www.refurnish.org.uk/>

## Turntable, Exeter

- <http://www.turntable.org.uk/>



# Household Waste Recycling Centres

- Shops
- Donation stations/drop offs
- PAT testing and offering electrical goods for sale
- Reuse target
- Profit share



# Community Action Groups Devon

- Support, guidance and training for local groups to help them to help themselves to reduce, reuse and recycle
- Collaborate meetings
- Skills shares
- Insurance
- Monitoring and reporting

# CAG DEVON GROUPS IMPACT



# Contact and more information



- [www.recycledevon.org](http://www.recycledevon.org)
- [www.CAGDevon.org](http://www.CAGDevon.org)
- [www.devon.gov.uk/wasteandrecycling/waste-management-strategy-for-devon/](http://www.devon.gov.uk/wasteandrecycling/waste-management-strategy-for-devon/)
- [Annette.dentith@devon.gov.uk](mailto:Annette.dentith@devon.gov.uk)



**Interreg**   
France ( Channel  
Manche ) England  
European Regional Development Fund

**BLUEPRINT**   
to a Circular Economy



EUROPEAN UNION

# Q&A

[projectblueprint.eu/roadshow](https://projectblueprint.eu/roadshow)



# Thank you for attending!

Please complete our quick feedback survey



 [projectblueprint.eu/roadshow](https://projectblueprint.eu/roadshow)

 [blueprint.project@essex.gov.uk](mailto:blueprint.project@essex.gov.uk)